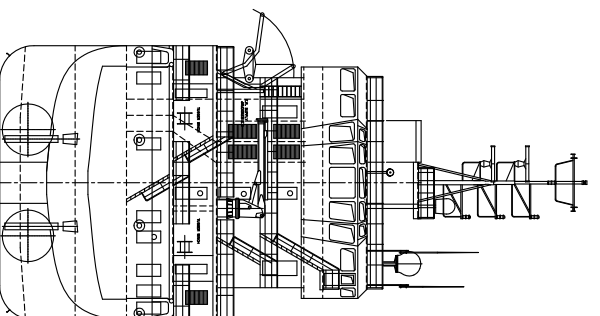
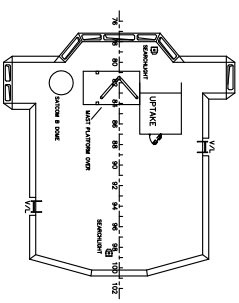


TYPE OF VESSEL: RO-RO  
 3,700 GRT

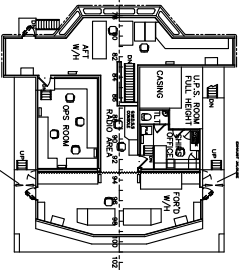
DECK 1	STEERING DECK
DECK 2	DECK 3
DECK 4	OFFICERS DECK
DECK 5	FOCSTLE DECK
DECK 6	ACCUM DECK
DECK 7	MAIN DECK
DECK 8	DECK 9
DECK 9	DECK 10
DECK 10	DECK 11
DECK 11	DECK 12



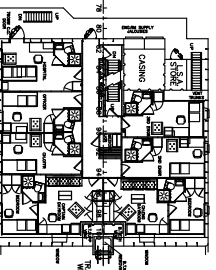
SECTION



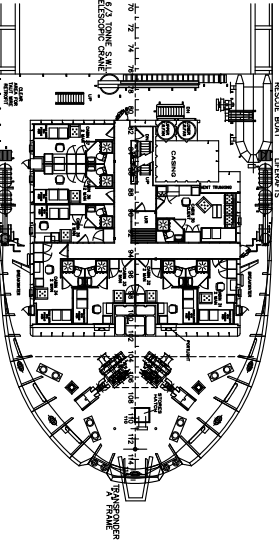
WHEELHOUSE TOP



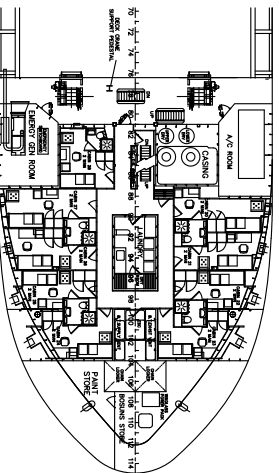
BRIDGE DECK



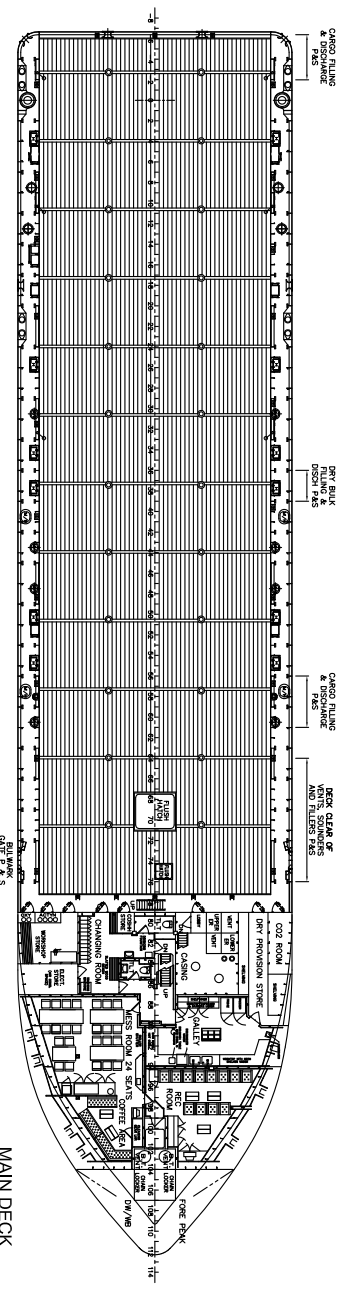
OFFICERS DECK



FOCSTLE DECK



ACCOM DECK



MAIN DECK

PRINCIPAL PARTICULARS

LENGTH OVER ALL:	73.80 m
LENGTH BETW. PERP.:	65.00 m
BREADTH:	16.00 m
DEPTH TO 1st DECK:	7.40 m
DEPTH TO 2nd DECK:	4.40 m
FRAME SPACING:	600 mm

PARTICULARS BELIEVED CORRECT BUT NOT GUARANTEED

DATE	SCALE	DWG. NO.	REV.	DATE	SCALE	DWG. NO.	REV.
04.11.14	1:1	001	0				


**Sealion Shipping Ltd.**  
 Company No. 04381985 Registered Office: Sealion Quay, 277-278, Victoria Road, Southampton, Hampshire, SO9 4JH

**Toisa Coral MFSV**  
 Outline General Arrangement

PREPARED BY: [Name]  
 CHECKED BY: [Name]  
 APPROVED BY: [Name]